





# THE LONDON GUIDE

**Where to shop, dine and stay**

# Regal Residence

The new Sterling Suite and  
Langham Club Lounge are the  
crown jewels of The Langham,  
London

**Clockwise  
from top left:**  
The suite's  
salon features  
a piano; the  
master  
bedroom is  
decorated  
in soothing  
tones; relax  
in the  
Langham  
Club Lounge;  
a sitting  
area in the  
second master  
bedroom





**T**alk about celebrating in style: Marking its 150th anniversary this year, The Langham, London has treated itself to an opulent revamp. The English grande dame isn't the only one with the chance to indulge, though – guests at the property can celebrate special occasions of their own in the hotel's opulent new Sterling Suite. The suite is part of an exclusive new section of the hotel and is spread across nearly 5,000 square feet filled with bespoke furnishings by British artisans inside and sweeping London views outside. Murano glass fittings pepper the contemporary space that includes up to six bedrooms for as many as 12 guests, a fully equipped kitchen, dining room, large marble bathroom and an around-the-clock personal butler.

The new Langham Club Lounge can accommodate up to 72 guests in a relaxing atmosphere ideal for curing jet lag and will be available to anticipate guests' every need from arrival to departure. A luxurious experience for even the most seasoned and elite world travellers, The Langham, London shows guests it knows how to age with grace and style – and celebrate with a bang – in these new additions.

**For more information call 0044-20-7636 1000 or visit [langhamhotels.com](http://langhamhotels.com)**





Mayfair's Mount Street is one of London's newer designer shopping destinations. **Below:** The world's top tailors can be found at Savile Row

# SHOPPING

LEAVE SOME  
SPACE IN YOUR  
LUGGAGE - YOU'LL  
NEED IT AFTER  
GIVING INTO  
TEMPTATION  
ON LONDON'S  
FASHIONABLE  
STREETS

## TOP SHOPS

The shopping street of shopping streets, **Bond Street** ([bondstreet.co.uk](http://bondstreet.co.uk)) runs from Piccadilly to Oxford Street and is chock-a-block with high fashion boutiques. Grab Fendi's current It bag, a silk scarf from Hermès and the season's newest look from Dior for this evening's Michelin-starred dinner - and that's just to start. Neighbouring **Mount Street** ([mountstreetmayfair.co.uk](http://mountstreetmayfair.co.uk)) entered the scene more recently when Marc Jacobs opened a shop there in 2007, and it didn't take long for other designers to get hip to the new destination. After closing its Bond Street location, Céline opened a flagship shop here and this year the street welcomes Christopher Kane alongside fellow Brit designer Vivienne Westwood. You can't visit London without a trip to iconic **Savile Row** ([savilerowbespoke.com](http://savilerowbespoke.com)) for an



Head to hip pop-up mall Boxpark before it closes next year. **Below:** Try The Parlour's decadent ice cream at Fortnum & Mason



impeccably crafted suit from a historic tailor. Dating back to the 1700s, Gieves & Hawkes – with a royal warrant – will sort out a finely made traditional jacket, or for something a bit more flashy, try Mick Jagger and Andy Warhol's tailor of choice, Edward Sexton. Then make your way to the capital's two landmark department stores. With more than one million square feet of upmarket retail space, **Harrods** (0040-20-7730 1234, [harrods.com](http://harrods.com)) has something for everyone in its 330 departments. World-famous food halls, bespoke fragrances, designer pet accessories and personal shopping assistance are just the tip of the iceberg of a Harrods shopping experience. For the finest of hampers spilling over with exotic teas, rich chocolates and gourmet picnic foods, **Fortnum & Mason** (0044-20-7734 8040, [fortnumandmason.com](http://fortnumandmason.com)) proves itself

*One Of A Kind on Portobello Road is a wonderland of well-kept designer items from decades gone by – YSL dresses from the Seventies, Sixties haute couture – with the illustrious “Aladdin’s Cave” where shoppers can find Victorian jewellery*







Junya Watanabe's  
S/S 2015 collection at  
Dover Street Market



deserving of the many royal warrants it's held since being founded in the 1700s.

## OFFBEAT BUYS

Away from the famed thoroughfares and enormous department stores discover more quirky and quaint shopping opportunities. Opened in 2011 as a pop-up mall and currently scheduled to close next year, Shoreditch's **Boxpark** (0044-20-7033 2899, [boxpark.co.uk](http://boxpark.co.uk)) houses 60 hip fashion and lifestyle brands in colourful shipping containers, like eco-friendly eyewear at Playn and earthy home goods in Decorum. Independent is the theme at **Gabriel's Wharf** ([southbanklondon.com/gabriels-wharf](http://southbanklondon.com/gabriels-wharf)) where shops with

a focus on design sit within a charming village setting on the bank of the Thames. Pick up funky Scandinavian jewellery at Mikala Djorup and handmade cold-pressed soaps from Thailand in Ganesha. Comme des Garçons' Rei Kawakubo created **Dover Street Market** (0044-20-7518 0680, [doverstreetmarket.com](http://doverstreetmarket.com)), an inventive indoor shopping space showcasing cutting-edge designers like Azzedine Alaïa, Alexander Wang and Ann Demeulemeester in industrial surrounds. Rose Bakery on the top floor is ideal for a lunchtime refuel, with fresh savoury items so popular they often sell out in a snap.



**Above:**  
Vintage gems  
at Rellik. **Left:**  
Gabriel's  
Wharf is ideal  
for summer  
shopping in  
the sun

## OLD-SCHOOL STYLE

The adage goes that in fashion everything old is new again – so don't overlook London's exceptional vintage finds. **One Of A Kind** (0044-20-7792 5853, [www.oneofakindvintagestore.com](http://www.oneofakindvintagestore.com)) on Portobello Road is a wonderland of well-kept designer items from decades gone by – YSL dresses from the Seventies, Sixties haute couture – with the illustrious "Aladdin's Cave" where, by appointment, shoppers can find Victorian jewellery to add to their collection. A top vintage shop for nearly two decades, **Circa** (0044-20-7736 5038, [circa.vintage.com](http://circa.vintage.com)) covers it all, from Edwardian gowns to Nineties trends by designers like Givenchy, Pucci and Balenciaga – all in pristine condition. Ermine flapper coats and mod mini dresses are some of the unique buys just waiting to be taken home. Rub shoulders with fashionable musicians and models at **Rellik** (0044-20-8962 0089, [relliklondon.co.uk](http://relliklondon.co.uk)) where most of the goods date back to the Seventies through Nineties. High street sits alongside Vivienne Westwood and Jean Paul Gaultier, and the eclectic mix makes for excellent statement wear.



# BEST OF *British*

DISCOVER AN INDULGENT MIX OF BRITISH AND INTERNATIONAL LUXURY BRANDS, SURROUNDED BY A WEALTH OF CULTURAL HISTORY

Treat yourself to the perfect day out. Just an hour from London, in the heart of the Oxfordshire countryside, Bicester Village is home to more than 130 luxury boutiques, including Alexander McQueen, Bally, Barbour, Kurt Geiger, Mulberry, Symthson, Vivienne Westwood and many more.

Visit before 1 October to receive complimentary Hands-free Shopping and Valet Parking when you present this advert to the Bicester Visitor Centre on your arrival.

BICESTER  VILLAGE  
#BICESTERVILLAGE

BICESTER VILLAGE IS ONE OF THE CHIC OUTLET SHOPPING® COLLECTION OF VILLAGES IN EUROPE AND CHINA

EUROPE BICESTER VILLAGE, LONDON KILDARE VILLAGE, DUBLIN LA VALLÉE VILLAGE, PARIS WERTHEIM VILLAGE, FRANKFURT  
INGOLSTADT VILLAGE, MUNICH MAASMECHELEN VILLAGE, BRUSSELS FIDENZA VILLAGE, MILAN LA ROCA VILLAGE, BARCELONA  
LAS ROZAS VILLAGE, MADRID CHINA SUZHOU VILLAGE, SUZHOU SHANGHAI VILLAGE, SHANGHAI  
(OPENING SPRING 2016)





# Sophisticated SHOPPING

Glam boutiques at Bicester Village are anything but a typical outlet experience

A tranquil atmosphere belies the designer London shopping experience found at Bicester Village. And this shopping escape is not only a haven for high fashion but also one where discounts of up to 60 per cent can be found on luxury brands in more than 130 boutiques. Strolling spacious, tree-lined streets, browse exclusive accessories in a relaxed atmosphere. For jet-setting travels from Tokyo to New York, Tod's and Jimmy Choo proffer up the ideal mix of comfort and glamour, while Dolce & Gabbana, Céline and Prada are just a few of the shops where lush leather bags and cutting-edge looks can be found.

Providing a VIP experience from start to finish, book a chauffeur drive from your stay in central London – or even direct pick-up from the airport – to travel to Bicester Village in ease. On arrival let a personal stylist join in to ensure that your wardrobe's newest additions are a perfect match. And in the midst of a lengthy shopping session, take a break and refuel with a Parisian brunch at Grand Café Villandry or something a bit more quintessentially British at Jamie Oliver's Fabulous Feasts. From collection to arriving back on the doorstep of your hotel, it's a chic shopping experience for the most discerning fashion aficionados.

For more information visit [bicester-village.com](http://bicester-village.com)



More than 130 shops harbour designer finds. **Above:** Pretty pedestrianised streets make for relaxed shopping



Find luxe accessories in a number of designer boutiques such as Coach. **Below:** Choose from eight restaurants and cafés



## COMPETITION

Enter our competition to be in with a chance of winning the following prize:

### PRIZE

- Two complimentary return train tickets from London to Bicester Village
- Two-course lunch for two at Bicester Village
- Two VIP Day Cards
- Hands-Free Shopping
- GBP 100 (AED 550) Bicester Village Gift Card

**Just email the answer to the following question to contest@appgulf.com by 31 May, 2015:**

*From which central London station do you catch the train to Bicester Village?*

**T&Cs apply**

*Prize valid from June 1 to November 30, 2015*

A portion of London's ancient Roman-built wall.  
**Below:** St Bartholomew's gatehouse hints at London's Tudor past



# SIGHTS & ATTRACTIONS

BOTH HISTORICAL  
AND MODERN,  
LONDON KNOWS  
HOW TO KEEPS  
ITS VISITORS  
ENTERTAINED

## AROUND TOWN

Nearly 2,000 years old, London is a medley of old and new that can easily be discovered while walking around town. Looking back to Roman Londinium, it's possible to view the ancient **London Wall** – sections stretch from the Tower of London to the Museum of London – originally built by the Romans and reconstructed in the medieval period. While most buildings are now unquestionably modern, charming old structures can still be found: In Smithfield, **St Bartholomew's gatehouse** survived the Great Fire of London and showcases a modest, half-timbered Tudor façade and some 13th-century stonework; in northern Bloomsbury the city's first pedestrianised shopping street, **Woburn Walk**, is a pleasant Victorian





The Royal Naval College at Maritime Greenwich.  
**Right, from top:** An exhibit at Wimbledon's museum; Leicester Square lights up in the evening



stroll past well preserved Dickensian shopfronts. Modern-day London awaits in **Chelsea**, where contemporary galleries sit side-by-side and King's Road runs through with trendy boutiques and high street fashion, making for an easy afternoon of browsing. **Soho's nightlife** beckons in the evening with lively bars, glam lounges and a touch of cabaret. Fun concoctions are mixed up in elegant Archer Street Cocktail Lounge or you can go subterranean at Mark's Bar (in the basement of Hix) for sophisticated drinks shaken to perfection. For a cabaret experience with no expense spared, The Box is the hedonistic ticket for a flamboyant night out; Café de Paris is another option with camp vaudeville theatre style, entertainers, live music and a dancefloor.

Get another view of London from above – one of the city's newest skyscrapers, 20 Fenchurch Street (colloquially referred to as the "Walkie-Talkie" due to its shape) opened **Sky Garden** ([skygarden.london](http://skygarden.london)) on the 35th floor earlier this year. The public space features panoramic views of the City of London from three-storey-tall landscaped gardens with vibrant birds of paradise, green ferns and African lilies blooming through the year. Back on ground level in south-east London, UNESCO World Heritage Site **Maritime Greenwich** (0044-20-8858 4422, [rmg.co.uk](http://rmg.co.uk)) is a sprawling ensemble of a park and royal buildings that played host to England's scientific and cultural endeavours from the 17th to the 19th century. Situated atop a hill, the Royal Park offers incredible

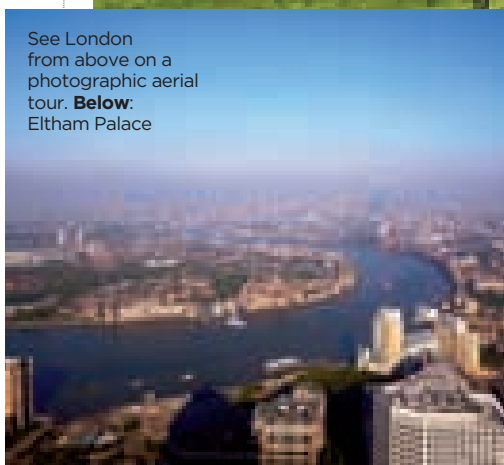
views over London while the site's old buildings house a number of museums including the **Royal Observatory** ([rmg.co.uk/royal-observatory](http://rmg.co.uk/royal-observatory)) – the location of the prime meridian and where, after its foundation in the late 17th century, a number of astrological and navigational advancements were made.

With summer kicking into high gear, the best way to experience London is outside. One of the city's favourite sporting events kicks off at **Wimbledon** (0044-20-8944 1066, [wimbledon.com](http://wimbledon.com)) in June with tennis greats going head to head for the championship trophy, to be awarded in July. For the biggest tennis fans, Wimbledon also features a museum and extensive behind-the-scenes tours of the grounds.

Spend a morning with nature hiking through Richmond Park



See London from above on a photographic aerial tour. **Below:** Eltham Palace



Alternatively, set sail on the River Thames with **Docklands Sailing & Watersports Centre** (0044-20-7537 2626, [dswc.org](http://dswc.org)), where twilight sailing sessions, kayaking and windsurfing training are offered. With great views over the river, the bar in the award-winning facility is ideal for post-sailing refreshments.

## PALATIAL SPACES

At the top of many visitors' itineraries are iconic royal landmarks like Buckingham Palace and the Palace of Westminster, but dig a little deeper into the royal residences to find a unique gem in **Eltham Palace** (entry from AED 70; 0044-37-0333 1181, [english-heritage.org.uk](http://english-heritage.org.uk)), which just reopened last month after a project that included unveiling five new rooms to the public. A mix of medieval castle (King Henry VIII spent his childhood here) and Art Deco mansion (the Courtauld's lease of the property in the Thirties led to a stylish modern redesign that retained historic aspects), the unusual manor is an intriguing sight to behold. Kensington Palace is a stop for many, but **The Orangery** (0044-20-3166 6113,

[orangerykensingtonpalace.co.uk](http://orangerykensingtonpalace.co.uk)) – where Queen Anne once entertained – located on the palace grounds overlooking meticulous gardens, is ideal for a classic high tea. The 18th-century building houses soaring ceilings, an elegant atmosphere and authentic British bites for a regal experience. Both a royal park and a nature reserve, **Richmond Park** (0044-30-0061 2200, [royalparks.org.uk](http://royalparks.org.uk)) is a vast enclosed green space – London's largest – where ancient oak trees grow, several hundred deer reside and an ornamental garden can be seen on a plantation. Explore the grounds by cycling, riding a kite buggy or saddling up for a bucolic horseback ride.

## EXCLUSIVE EXPERIENCES

If travelling in style is your cup of tea, there are plenty of opportunities to do so in London. Start the holiday off with an indulgent hair session at award-winning salon **Stuart Phillips** (0044-20-7379 5304, [stuartphillips.co.uk](http://stuartphillips.co.uk)) or a fancy wet shave at **Geo. F. Trumper** (0044-20-7499 1850, [trumpers.com](http://trumpers.com)) for gentlemen. Charter a **photographic aerial tour** (0044-20-17-8068 8380, [flysfc.com](http://flysfc.com)) in a twin-engine aircraft

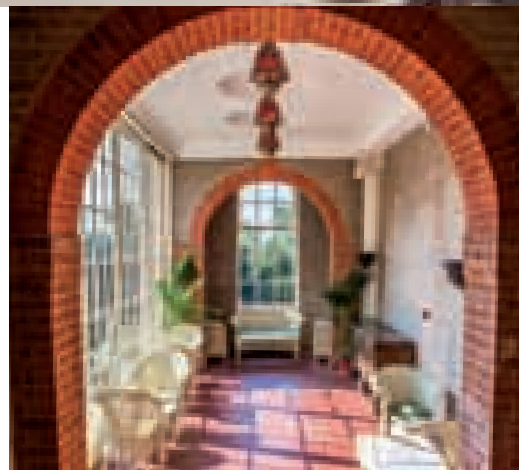




The London Eye  
soars 135m above  
South Bank



Get a gourmet experience  
in one of the London Eye's  
private capsules

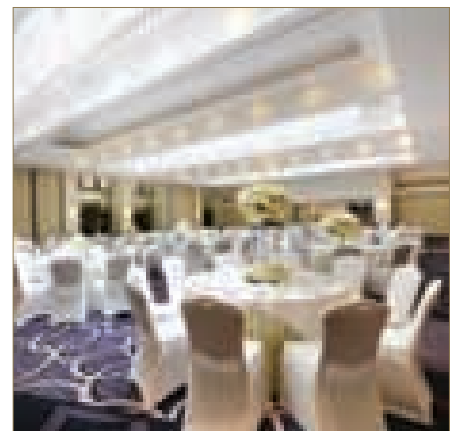
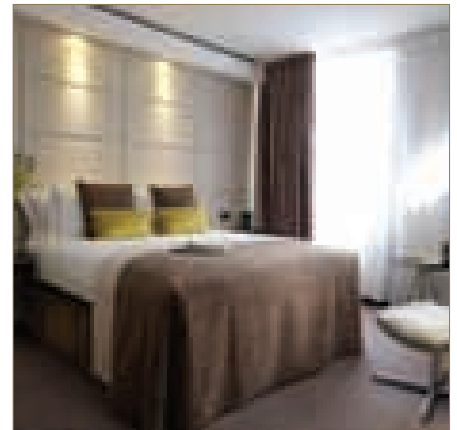
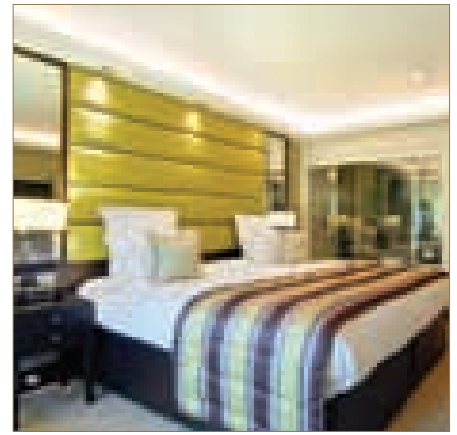


**Right:** The  
Orangery at  
Kensington  
Palace. **Below:**  
Retail therapy  
at Harrods is  
part of the  
Rolls-Royce  
shopping tour

with an experienced pilot to swoop down for snaps of landmark sights to be captured from above. If heights aren't appealing, hit the streets in a chauffeur-driven **Rolls-Royce shopping tour** (tours from AED 2,320; 0044-20-7261 0222, [claremontexecutive.com](http://claremontexecutive.com)) with stops at Harrods, Portobello Market, Bond Street and more – not to mention ample trunk space for all those shopping bags. A ride on a Ferris wheel is a unique way to see the town, but wouldn't it be better with bubbly? An hour-long **London Eye private bubbly tasting** (from AED 5,240 for a private capsule; 0044-87-1781 3000, [londoneye.com](http://londoneye.com)) includes five different glasses of fizz from House of Pommery guided by an expert from Vinopolis. It's only natural to want to hit the major sights if this is your first time in London and a **bespoke tour with Henrietta Ferguson** (tours from AED 1,055; 0044-20-7835 5668, [henriettaferguson.com](http://henriettaferguson.com)) is the way to see them. With VIP access and her wealth of knowledge, tours of Buckingham Palace, Big Ben, the Houses of Parliament and Westminster Abbey are anything but typical.







**THE MONTCALM<sup>®</sup>**  
LUXURY HOTELS  
LONDON



London is one of the most exciting and vibrant cities in the world. With its world-class attractions, the Capital offers an individual experience for all. And right at its heart you will find our luxury hotels. From modern to historic building designs, fine dining restaurants to gastro eateries and pampering Spas to state of the art business facilities, The Montcalm Luxury Hotels represents luxury lifestyle redefined.

**THE MONTCALM<sup>®</sup>**  
LUXURY HOTELS  
LONDON

**THE MONTCALM**  
LONDON MARBLE ARCH

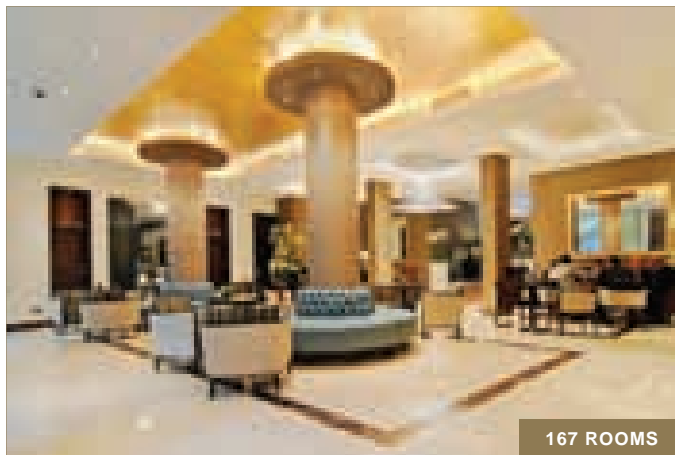
**THE MONTCALM**  
*at The Old Bailey*  
LONDON CITY

**M**  
BY MONTCALM<sup>®</sup>

**THE MARBLE ARCH**  
BY MONTCALM  
LONDON

**LONDON CITY SUITES**  
BY MONTCALM  
LONDON





167 ROOMS

The Montcalm London Marble Arch  
34-40 Great Cumberland Place, London, W1H 7TW



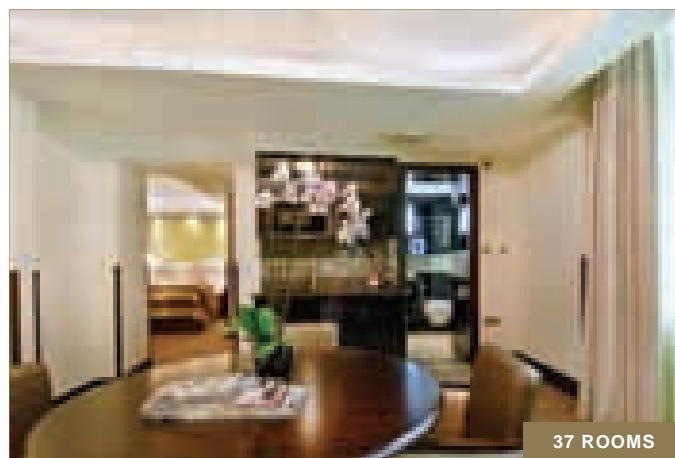
47 ROOMS

Marble Arch By Montcalm  
31 Great Cumberland Place, London, W1H 7TA



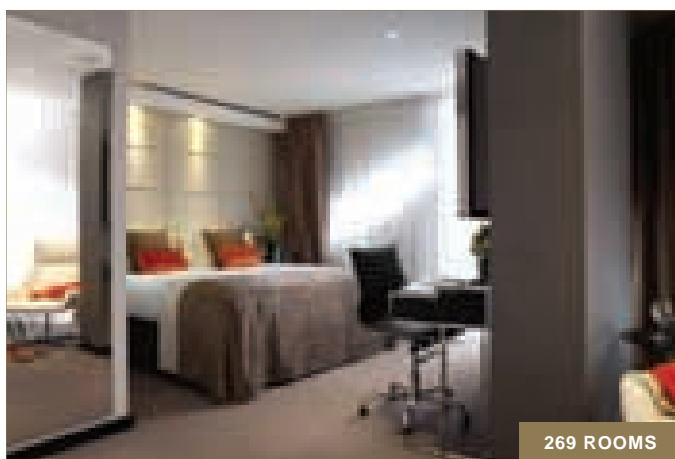
235 ROOMS

The Montcalm at The Brewery London City  
52 Chiswell Street, London, EC1Y 4SA



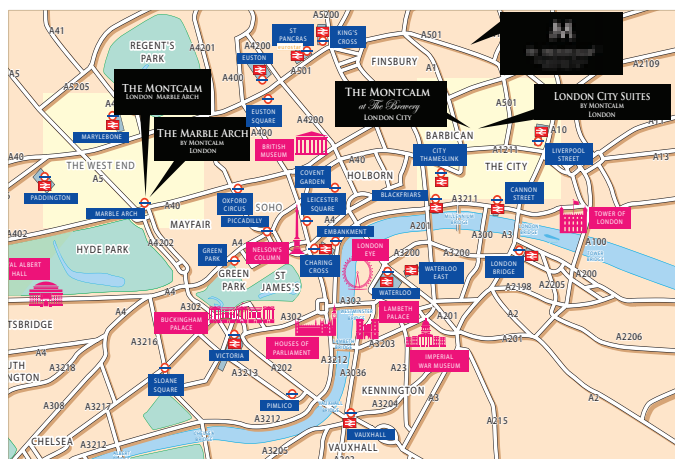
37 ROOMS

London City Suites By Montcalm  
42-46 Chiswell Street, London, EC1Y 4SB



269 ROOMS

M by Montcalm Shoreditch London Tech City  
151-157 City Road, London, EC1V 1JS



MEET US AT THE ARABIAN TRAVEL MARKET  
STAND NUMBER - HC7075



Central Reservations:  
Tel: +44 (0) 20 7479 2233 Fax: +44 (0) 20 7745 1459 Email: [reservations@themontcalm.com](mailto:reservations@themontcalm.com)  
[www.themontcalm.com](http://www.themontcalm.com)

The British Library contains the world's largest number of catalogued items. **Right:** Whitechapel Gallery's exterior features art by Rachel Whiteread



## MUSEUMS

London is awash with museums – each as fascinating as the next. This summer, don't miss these current exhibitions. **Alexander McQueen: Savage Beauty at the Victoria & Albert** (ends August 2; tickets from AED 95; 0044-20-7942 2000, [vam.ac.uk/savagebeauty](http://vam.ac.uk/savagebeauty)) is a retrospective of work from the *enfant terrible* of British fashion spanning from McQueen's graduate collection to his unfinished A/W 2010 runway pieces. With 240 elaborate and sometimes bizarre items, it's the museum's largest-ever fashion exhibition. Afterwards, browse the V&A's permanent collection of more than 4.5 million art and design objects spanning a 5,000-year period. **Magna Carta: Law, Liberty, Legacy at the British Library** (ends September 1; tickets from AED 65; 0044-33-0333 1144, [bl.uk](http://bl.uk)) marks the celebrated document's 800th anniversary in an exhibition that takes an in-depth look at its history and impact with two original Magna Carta manuscripts on display as well as other medieval artefacts and documents. More than just a library, check out other exhibitions, educational talks and tours, like a behind-the-scenes look at the conservation studios. **Indigenous Australia: Enduring Civilisation at the British Museum** (ends August 2; tickets from AED 55;

# ARTS & CULTURE

CULTURE VULTURES WILL FIND THEMSELVES SPOILT FOR CHOICE IN LONDON WITH ITS ARRAY OF TRADITIONAL THEATRE, CONTEMPORARY ARTS, EDUCATIONAL MUSEUMS – AND EVERYTHING IN-BETWEEN



A whimsical sculpture at the Serpentine Gallery.  
**Right:** Eclectic Wilton's includes activities like ping pong tournaments



[britishmuseum.org](http://britishmuseum.org)) is the UK's first major exhibition featuring objects from one of the globe's oldest extant cultures, dating back over 60,000 years. The extensive catalogue of items includes some that are on display to the public for the first time. Explore more human history and culture – for instance, in the exhaustive Egyptian department and the Greek and Roman room – through the rest of the museum.

## GALLERIES

An incubator for contemporary art, London's galleries showcase the globe's most influential artists. Gallery-hopping in Chelsea is a great place to get started, but fine art isn't limited to just one neighbourhood. In Marylebone, **Lisson Gallery** (0044-20-7724 2739, [www.lissongallery.com](http://www.lissongallery.com)) represents acclaimed artists such as Ai Weiwei and Marina Abramovic, and has been focusing on minimal and conceptual art since 1967. For the first time in 30 years, look out for an exhibition of late Brazilian sculptor Sérgio de Camargo's work of black and white marble sculptures opening here on May 22. Behind an Arts and Crafts-style façade in Tower Hamlets, **Whitechapel Gallery** (0044-20-7522 7888, [whitechapelgallery.org](http://whitechapelgallery.org)) has showcased artists including

## *The Old Vic has been putting on quite the show with in-house productions helmed by artistic director Kevin Spacey*

Frida Kahlo and Jackson Pollock for more than a century and continues to nurture international modern artists. Currently on: an exhibition bringing Shiraz's Festival of Arts, which ended in 1977, back to life through a collection of photographs and archived film. In Kensington Gardens, **Serpentine Gallery** (0044-20-7402 6075, [serpentinegalleries.org](http://serpentinegalleries.org)) exhibits both emerging and established artists in a quaint former tea pavilion. The current exhibition, *Bite Your Tongue* showcases American figurative artist Leon Golub's works through a collection of emotional paintings depicting the misuse of power.

## PERFORMING ARTS

When in town, head to the theatre for world-class performances spanning

the Shakespearean to the avant garde. For nearly 200 years **The Old Vic** (0044-84-4871 7628, [oldvictheatre.com](http://oldvictheatre.com)) has been putting on quite the show with recent seasons presenting 16th- and 17th-century plays and in-house productions helmed by artistic director Kevin Spacey. Get your glad rags on for Cole Porter's musical *High Society* – based on the comic play *The Philadelphia Story* – now on stage. Experimental **Roundhouse** (0044-30-0678 9222, [roundhouse.org.uk](http://roundhouse.org.uk)) shines the spotlight on young creatives producing cutting-edge performance art. A mix of acts through May include Circolumbia, a dance-circus hybrid group, and *The Last Word*, a festival of spoken word, storytelling and live performance. A former 18th-century hops house, **Wilton's Music Hall** (0044-20-7702 2789, [wiltons.org.uk](http://wiltons.org.uk)) now runs a distinctive programme of performing arts from opera to puppetry, classical music to magic. The building is currently undergoing renovations (expected to be completed this year), but the music hall remains open with performances this month such as a cabaret festival, a quartet performing Beethoven and talks focusing on the history of the Grade II building that houses Wilton's.



# DINING

Tuck into Peruvian fare at laid-back Pachamama

ONE OF THE GLOBE'S MOST ON-TREND DINING DESTINATIONS, LONDON IS CROWNED WITH MICHELIN STARS AND AN EVER-EXPANDING ROSTER OF NEW RESTAURANTS

## FRESH FARE

It's difficult to keep track of all the new restaurants in London, but travelling foodies may want to book tables at a few recent launches that shouldn't be missed. Celebrity chef Judy Joo helms **Jinjuu** (0044-20-8181 8887, [jinjuu.com](http://jinjuu.com)) with two floors of contemporary Korean fare. Try the buzzy ground floor for *anju* – small plates to be eaten while socialising, like fried chicken bites and dumplings – or head downstairs for a full dining experience with *bibimbap* bowls and stone bass in banana leaf. An addition to the Peruvian cuisine trend is **Pachamama** (0044-20-7935 9393, [pachamamalondon.com](http://pachamamalondon.com)), serving flavourful dishes in a cosy basement-like setting. Prawns in “tiger’s milk” get a British twist with a touch of mustard, and tender ribs in a pleasantly tangy barbecue sauce are a few of the treats in this unpretentious yet exceptional spot. Pull up a seat at the friendly kitchen bar of **The Palomar**

Jinjuu's Hot Tok dessert





Colourful dishes  
are concocted at  
The Palomar



Chiltern Firehouse's  
hot tables don't  
remain empty for  
long. **Above:** Brett  
Graham, Head Chef  
at The Ledbury



(0044-20-7439 8777, [thepalomar.co.uk](http://thepalomar.co.uk)) and watch as chefs appear with charming plates and crockery filled with modern Mediterranean and Middle Eastern delights. With its jolly atmosphere, the food would likely be enjoyable even if it weren't very good – but good it is and modern dishes like *shakshukit* (a deconstructed kebab) and seafood *chreymeh* (a Moroccan stew with cod, octopus and mussels) will keep guests coming back. On the British Isles, **Pond** (0044-20-3772 6727, [pond-dalston.com](http://pond-dalston.com)) is inspired by another island entirely, bringing new Hawaiian cuisine to a Victorian warehouse in Dalston with fittingly dim lighting and industrial style. A surprising favourite on the Big Island is Spam (canned, precooked meat), to which the menu happily pays tribute in dishes like rice-coated Spam with teriyaki sauce – but if meat from a can doesn't grab you there's plenty more worth saying *aloha* to, such as the sea bass with chilli coconut sauce.

## MISSION: MICHELIN

With more Michelin-starred restaurants than you're likely to have time to try in one visit, it's worth choosing a few with varied taste and atmosphere. At the much acclaimed **Ledbury** (0044-20-7792 9090, [theledbury.com](http://theledbury.com)) in Notting Hill, a hushed and serious

atmosphere prevails as modern French dishes with a hint of British influence are prepared with unexpected herbs, roots and vegetables, such as a dish of pigeon with cherries, red vegetables and leaves. Behind a discreet sliding door in Mayfair lies **Umu** (0044-20-7499 8881, [umurestaurant.com](http://umurestaurant.com)) where Kyoto-inspired tranquillity and design set the mood. The meticulously curated *kaiseki* (a Japanese tasting menu) is the best way to go, with dishes of fresh ingredients that may include charcoal-grilled game and kombu-cured Cornish lobster. As the name suggests, **Texture** (0044-20-7224 0028, [texture-restaurant.co.uk](http://texture-restaurant.co.uk)) likes to play with the consistencies and flavours of the ingredients in its dishes. The relaxed, Scandinavian-influenced restaurant – immediately evidenced in the high-ceilinged, clean design of the dining room – is a must-visit for gourmands looking for surprising pairings and clever interpretations of the prosaic.

## HAUTE TABLES

Join the city's movers and shakers at a few of the current hotspots to get a real taste of what's hip in town. Opened in 2014, ahead of the boutique hotel in which it's housed, the restaurant at **Chiltern Firehouse** (0044-20-7073 7676, [chilternfirehouse.com/restaurant](http://chilternfirehouse.com/restaurant)) was and

## On the British Isles, Pond is inspired by another island entirely, bringing new Hawaiian cuisine to a Victorian warehouse in Dalston

remains one of London's hardest tables to book. Spilling over with celebrities and an achingly trendy vibe, the food – contemporary-American-influenced fare by Michelin-starred Nuno Mendes – more than manages to stand out on its own above the buzz. The dark walls and velvet-upholstered banquettes of **Kitty Fisher's** (0044-20-3302 1661, [kittyfishers.com](http://kittyfishers.com)) in Shepherd's Market – a destination that took the city's foodies by surprise – opened quietly, but the mouth-watering, wood-grilled fare was soon the talk of the town. If tables are booked up – and they likely are – a seat at the bar is often available to try dishes like creamy whipped cod's roe and steak with a caramelised crust.



The Goring's classic style makes it one of London's top luxury stays



# HOTELS

WHERE TO LAY  
YOUR HEAD IN  
A CITY FULL  
OF INCREDIBLE  
ACCOMMODATION?  
WE NARROW  
DOWN OUR  
FAVOURITES

## GRAND OPENINGS

In a global city like London there's always something new and exciting to discover, and with a number of recent launches the hotel scene is no exception. The long-anticipated **Shangri-La Hotel, At The Shard** (doubles from AED 2,015; 0044-20 7234 8000, [shangri-la.com/london](http://shangri-la.com/london)) matches oriental elegance with sweeping City of London views from floor-to-ceiling windows in the capital's tallest building. The 202 rooms are laden in silk, marble and state-of-the-art technology to complete the luxe experience. André Balazs' newest property, **Chiltern Firehouse** (doubles from AED 2,660; 0044-20-7073 7690, [chilternfirehouse.com/hotel](http://chilternfirehouse.com/hotel)) in Marylebone,

features just 26 rooms – with working fireplaces, mahogany accents and plush banquettes – in a restored 19th-century fire station. On the doorstep of exciting Soho, **Ham Yard Hotel** (doubles from AED 2,320; 0044-20-3642 2000, [firmdalehotels.com](http://firmdalehotels.com)) is a charming stay with everything from a Fifties-style bowling alley to a rooftop garden. Designed by Kit Kemp, rooms are cosy with colourful textiles, large windows and quintessential British flair. If a river view is what you're after, **Mondrian London at Sea Containers** (doubles from AED 1,075; 0044-20-3747 1000, [morganshotelgroup.com](http://morganshotelgroup.com)) combines old-school glamour with fun in this contemporary hotspot – take advantage of the warmer months by



**Left:** The cosy Ham Yard Hotel is one of the city's newest properties. **Above:** Look out for A-listers at Chiltern Firehouse

booking a room with an ivy-clad patio or furnished private balcony overlooking the Thames. In Shoreditch the new **M By Montcalm** (doubles from AED 1,320; 0044-20-3837 3000, [mbymontcalm.co.uk](http://mbymontcalm.co.uk)) just opened this spring with sleek style, marble bathrooms and lavish pillow menus.

## CLASSICALLY ENGLISH

For a thoroughly British experience, a *grande dame* with timeless elegance and rich history is the ideal choice. In the West End and a stone's throw from iconic landmarks, **The Langham, London** (doubles from AED 1,890; 0044-20-7636 1000, [london.langhamhotels.com](http://london.langhamhotels.com)) has been hosting the globe's *crème de la crème* for 150 years with classic English hospitality. In Covent Garden, **The Savoy** (doubles from AED 2,310; 0044-20-7836 4343, [fairmont.com/savoy-london](http://fairmont.com/savoy-london)) is a treat for jet-set gourmands with traditional afternoon tea and British roast dinners. The Edwardian-style rooms give off a regal vibe thanks to ornate wallpaper, chandeliers and layers of lush curtains. Art Deco masterpiece **Claridge's** (doubles from AED 2,580; 0044-20-7629 8860, [claridges.co.uk](http://claridges.co.uk)) showcases authentic Twenties-era touches and British aesthetics, particularly in the Mivart suites created by royal designer David Linley. A

A Superior Room in Shangri-La Hotel, At The Shard looks over southern London





*A galactic lift,  
Dali-esque  
furnishings and  
design by Philippe  
Starck complete an  
experience that could  
be mistaken for a  
dream sequence*

family-run hotel in Belgravia, **The Goring** (doubles from AED 2,175; 0044-20-7396 9000, [thegoring.com](http://thegoring.com)) is quintessentially English with walls of Gainsborough Silk, a tranquil private garden and rooms with plush linens draped over six-foot-long beds.

### EYE ON DESIGN

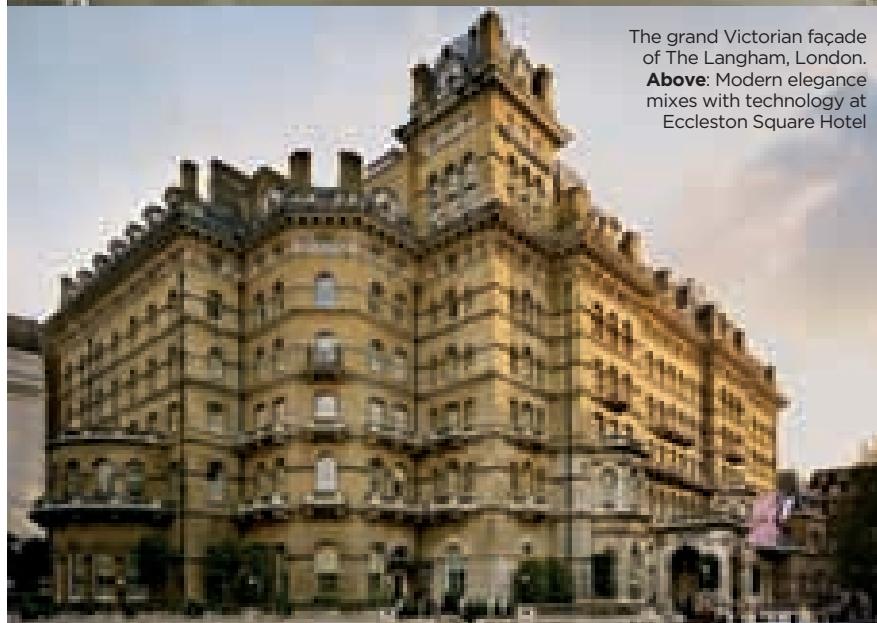
A leader in the design world, London is known for a quirky, experimental aesthetic in fashion and décor, and hotels have followed suit. Entering the **Sanderson London** (doubles from AED 1,365; 0044-20-7300 1400, [morganshotelgroup.com](http://morganshotelgroup.com)) is akin to going down the rabbit hole – a trait that its Mad Hatter's afternoon tea exemplifies. A galactic lift gives guests the illusion of flying through space, Dali-esque furnishings add a touch of the surreal and design by Philippe Starck completes an experience that could be mistaken for a dream sequence. A cutting-edge hotel if ever there was one, **Eccleston Square Hotel** (doubles from AED 925; 044-20-3503 0693, [ecclestonsquarehotel.com](http://ecclestonsquarehotel.com)) caters to savvy millennials by combining sleek Italian design – Promemoria handmade furnishings and Murano glass – with rooms filled with high-tech goodies like 3D televisions, personal iPad 2 tablets and shower walls that turn from transparent to frosted at the touch of a button. In quirky Camden Town, **Rough Luxe** (doubles from AED 855; 0044-20-7837 5338, [roughluxe.co.uk](http://roughluxe.co.uk)) takes shabby-chic to another level. Deep soaking tubs sit alongside walls of faux torn wallpaper; retro television sets can be watched from plush beds; and rotating artworks hang next to everyday objects – all deftly curated by acclaimed architect and designer Rabih Hage.

### GETTING THERE

British Airways ([britishairways.com](http://britishairways.com)), Emirates ([emirates.com](http://emirates.com)), Etihad ([etihad.com](http://etihad.com)) and Qatar Airways ([qatarairways.com](http://qatarairways.com)) fly direct to London from the GCC



Sleek boutique hotel M by Montcalm in Shoreditch



The grand Victorian façade of The Langham, London.  
**Above:** Modern elegance mixes with technology at Eccleston Square Hotel



THE LANGHAM—Classic Indulgence  
Featuring Stone Shields, 2012, by Justin Berry

## CHAPTER 1. THE ART OF INSPIRED INDULGENCE

### THE ART OF THE STAY



LANGHAM  
— & —  
HOTELS RESORTS

CHICAGO LOS ANGELES NEW YORK HONG KONG SHANGHAI LONDON MELBOURNE SYDNEY 16 MORE DESTINATIONS WORLDWIDE  
LANGHAMHOTELS.COM